

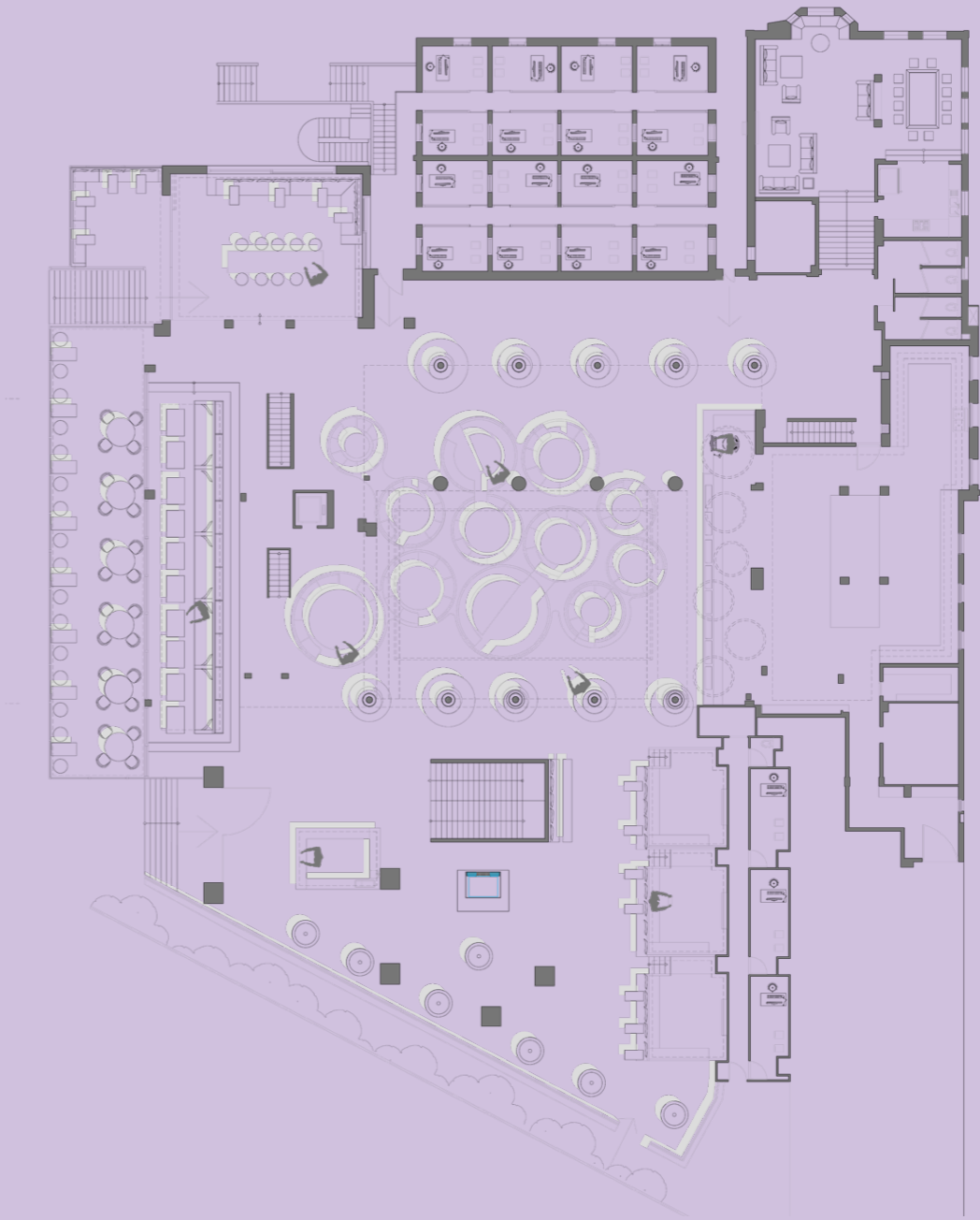
luma jawhari 01

BLUE

This semester was one of the hardest semesters for me. Coming up with a concept had never been so difficult and confusing and up till today I still wonder what if... What I came up with for the renovation of the LAU cafeteria is a mixture of two things, the play of color with light and levels. When I feel like I need a break or am too stressed an image of blue-ocean always calms me. In order to create a space to escape the stress of university I wanted to bring this blue ocean aroma into reality. By making my whole space white and adding a bit of color on the cushion I can create a different ambience when the sun hits them and reflects these colors off to the walls. In order for that to be successful the walls and ceiling have been made of resin. Due to the levels, every area has a dropped ceiling and is elevated one or two steps. Every function is different according to the location on plan. Also the circular seating in the center of the space is leveled.

Another major issue for me was sunlight. I opened a skylight almost as much as we can open it to allow as much sunlight as possible. From the skylight I created four textured pieces of glass with blurred pictures of the ocean on them so when the sun hits them the reflection in the whole area would be given off as if you are in an ocean.

The seating structure in the center of the cafeteria looks a bit like a wave on the sides, this was a coincidence but I felt like it goes well with the mood. I wanted to break the rectangularity of the space by creating something organic. The height of the wave is justified by people seating being able to view the whole cafeteria space without having their vision blocked. The main color I used was blue and on the exteriors I added some plum-red to complement it.



luma jawhari 02



Lit table tops made from Corian Illumination series in Artic White

Furniture made from white and blue leather

Wave-like structure done in this way in order to allow a person sitting in a booth to see the whole space comfortably.  
Made out of molded corian and contains adhesive joints

Platforms and steps made out of MDF painted white

luma jawhari 02

