



Pregnant Opportunities in this Street
(Two Main arteries and gateways intersecting)

- Intersection provides opportunity to a shared economic interest.
- Scale and importance of street give potential to hybrid functions.
- Similar characteristics and use in both streets.
- Central area dominant by empty spaces.
- "Invisible" / hidden production activities including small scale agriculture, wood, steel and wax workshops.
- Significant number of voids along this path.

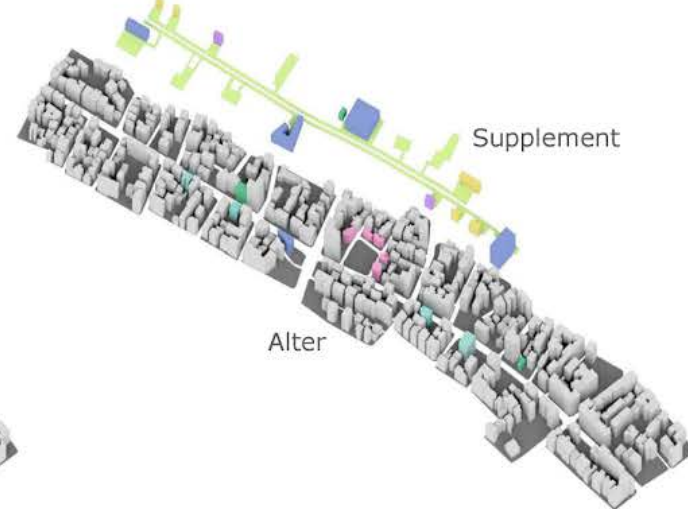
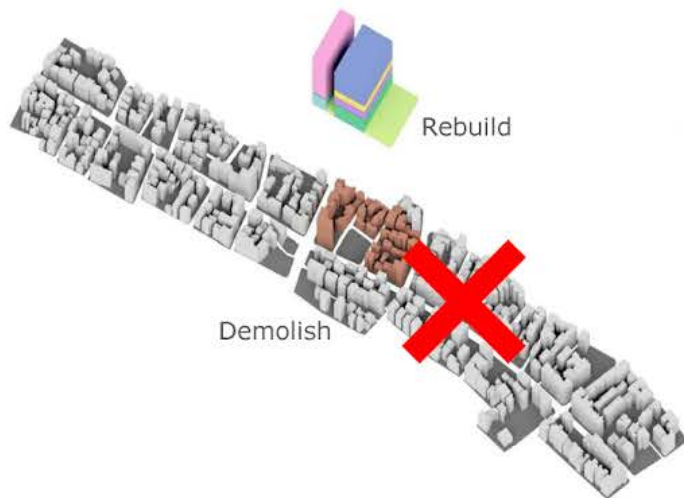
Evident Probelmatics

- A dividing psychological barrier, Old Saida Road.
- Little activity or happenings at intersection.
- Main ground level use always retail, and many times interrupted.
- No cafes, or places of gathering of any sort.
- Street in favor for vehicular movement over pedestrian flows.
- Street in favor for vehicular movement over pedestrian flows.

STRATEGY

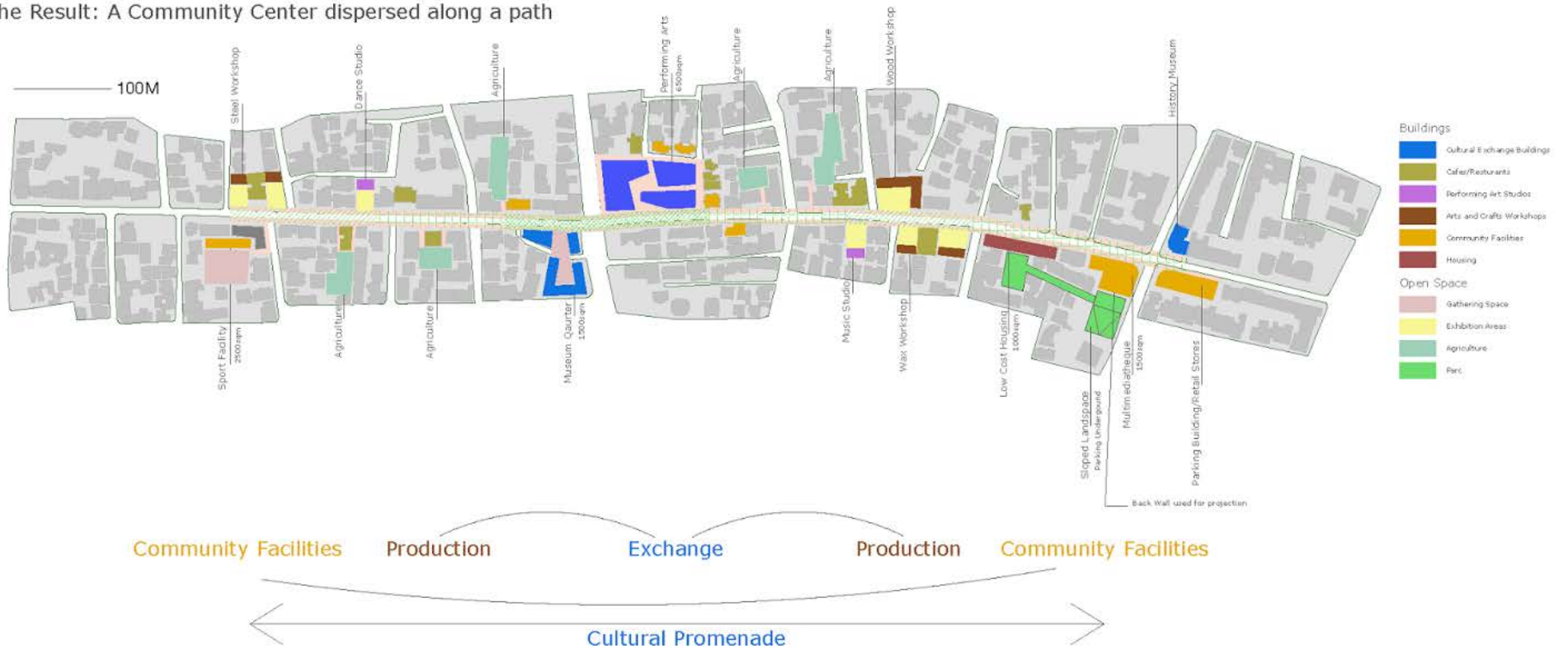
- Reject totalitarian planning
- Reject notion of urban island
- Reject demolition of whole blocks regardless of architectural merit

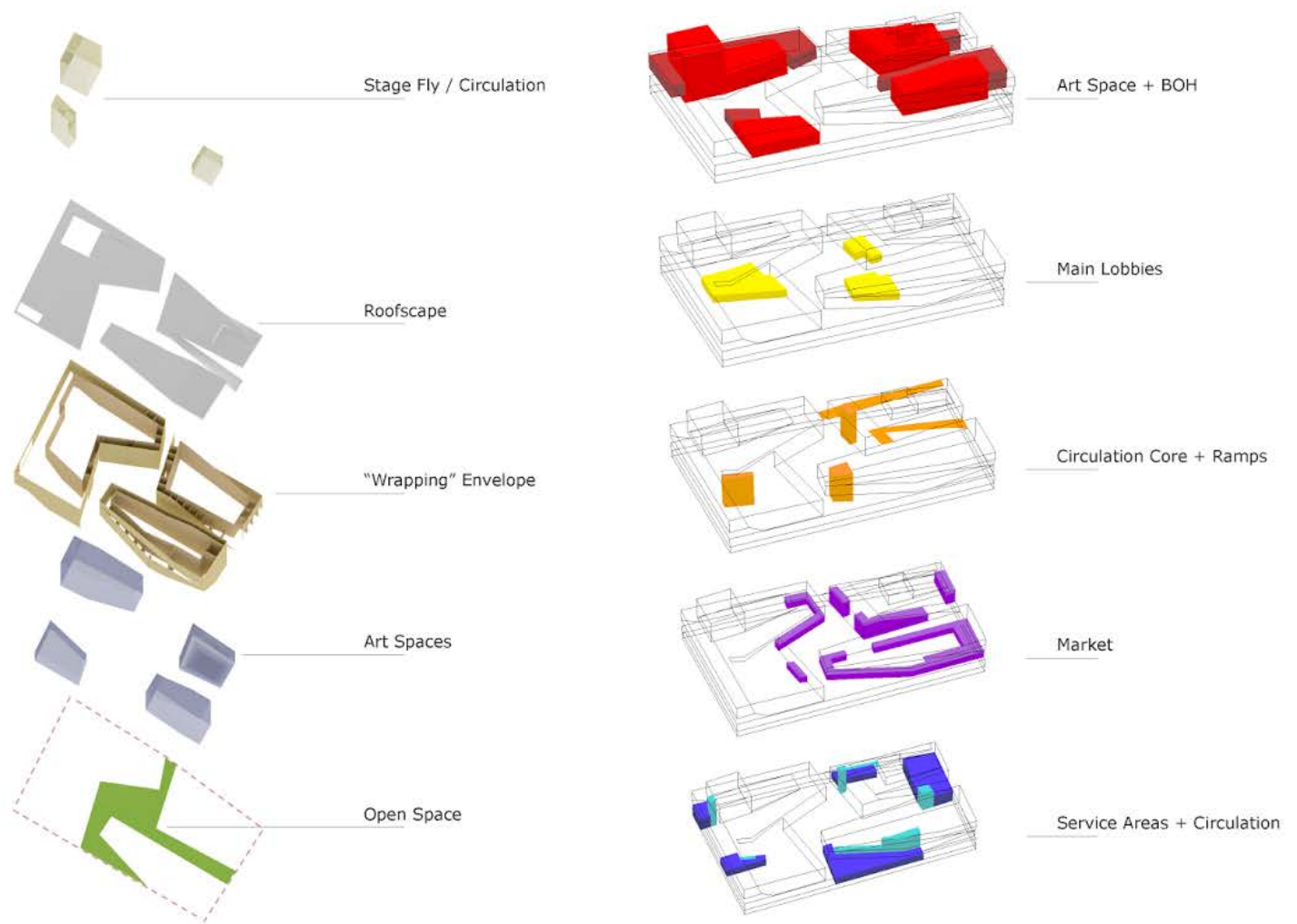
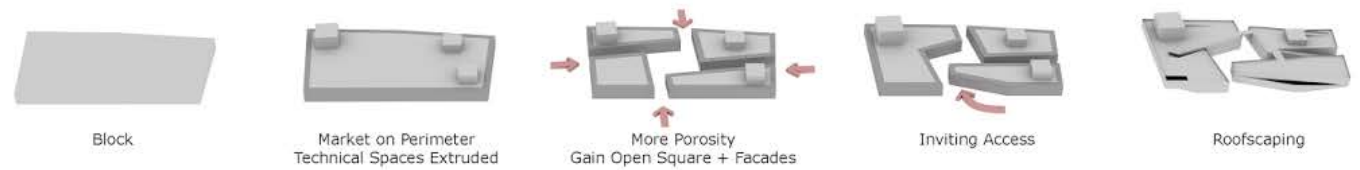
Redefine and re-use street in a new way
Gentle interventions that maintain a heterogeneous and diverse architecture
Trigger a metamorphic process that will lead to a gradual transformation

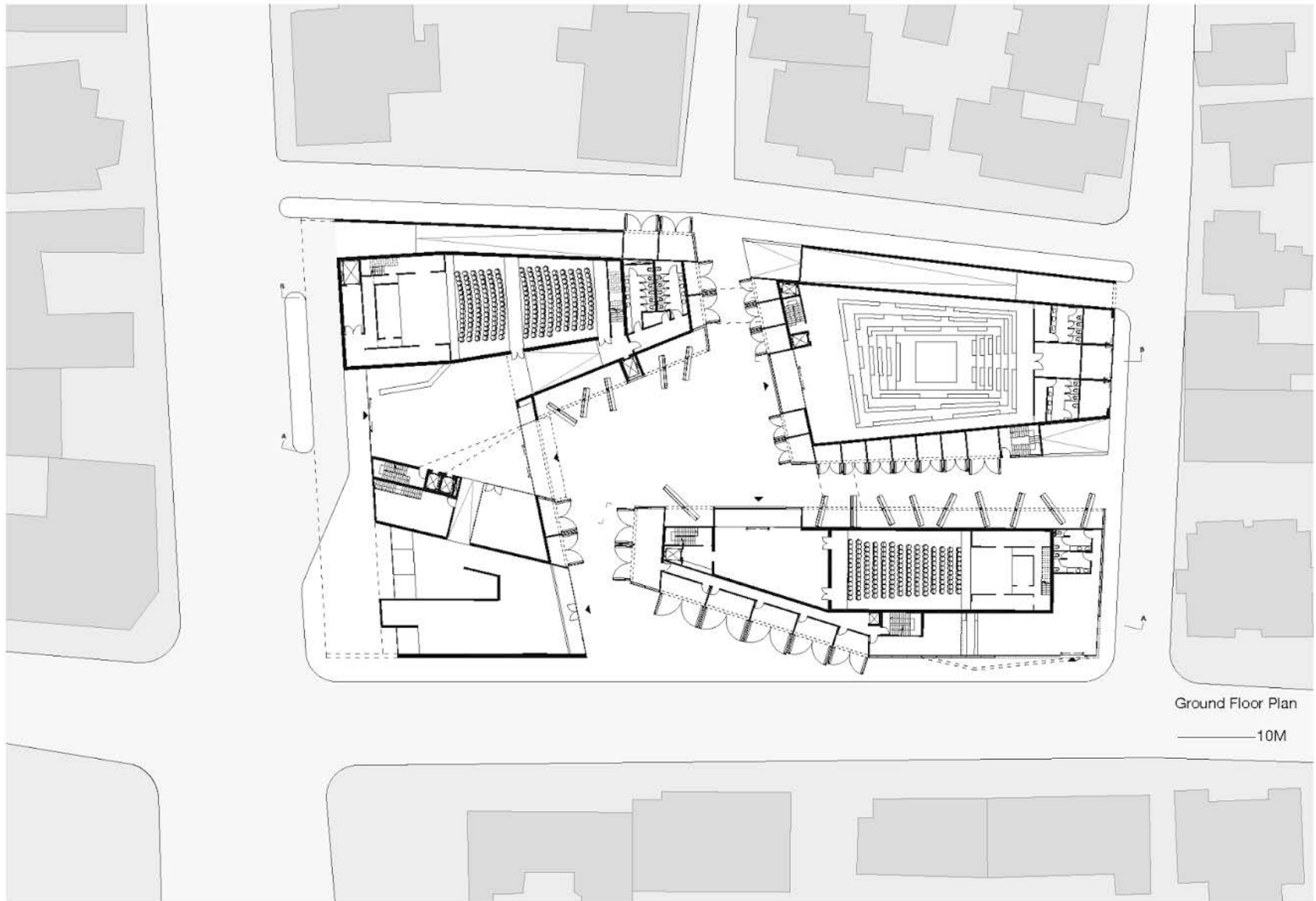


Local activities that present an opportunity for a shared economic interest that promotes collective work simultaneously having a potential to become a cultural magnet in the area.

The Result: A Community Center dispersed along a path

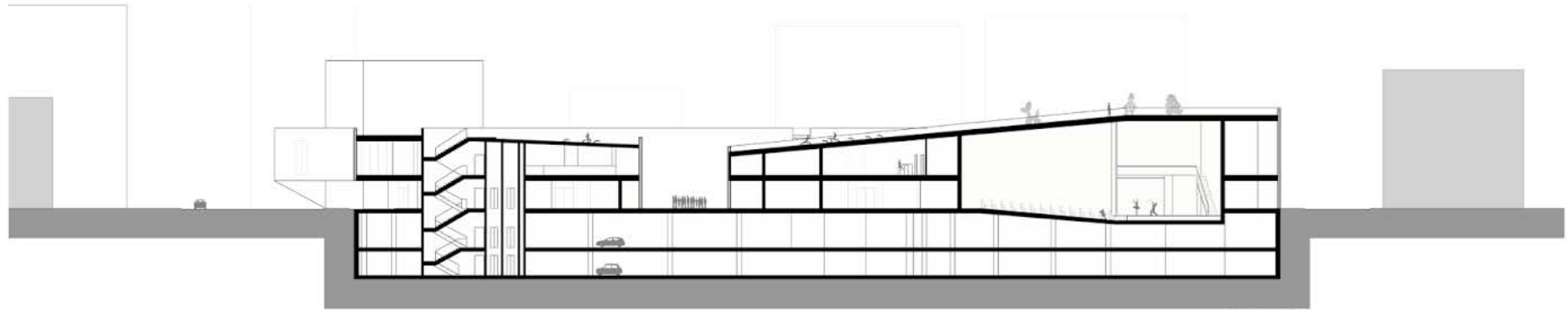






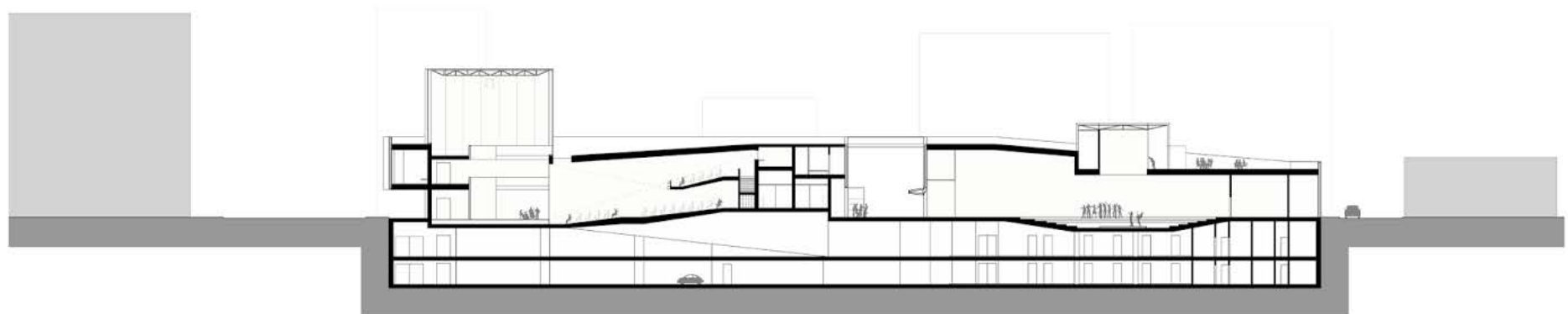
Ground Floor Plan

———10M



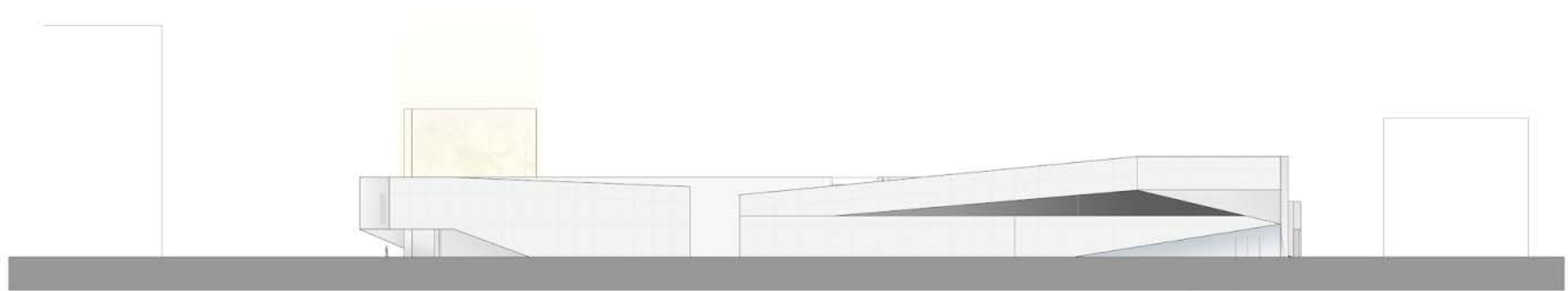
Section AA

10M



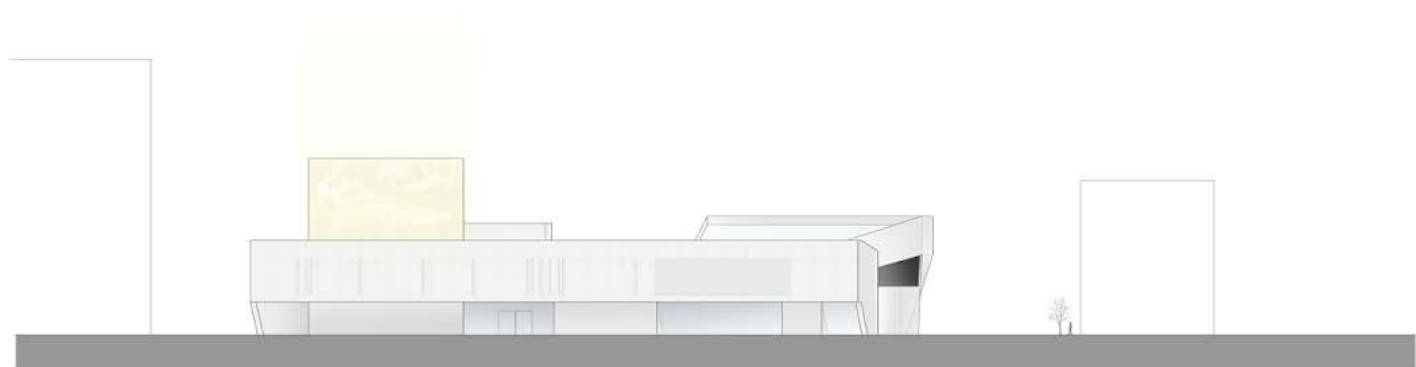
Section BB

10M



South Elevation

10M



West Elevation

10M

