

My area of interest lies between Chiyah and Ayn El Remmane. It is a cross-sectional line that extends from an authentic neighborhood in Chiyah to a similar residential neighborhood in Ayn El Remmane passing through the green line. This relatively small area contains multiple layers of typologies with all complexities that come along; It has two authentic urban pockets with the preservation of the traditions of rural housing, buildings that go back to the pre-war period and that constitute the general hue of the area, new high-rise buildings that gather around the green line, Beirut Mall, and a tunnel that divides the east side from the west side.

The urban pockets are the only places where there is a preservation of communication between dwellers. Although they are chaotic, but somehow they share features that maintain a homogeneous mood along these neighborhoods.

Although Beirut Mall's Motto was bringing together East and West, it rather separates them completely from each other, especially the urban pockets which become invisible and inaccessible due to the existence of this mall.

I believe that all the complexities that could exist along the Green line climax at this point making it an interesting sample that could be repeated over the line.



Layer 1: Recent



Layer 2: 50s & 60s



Layer 3: Urban pockets

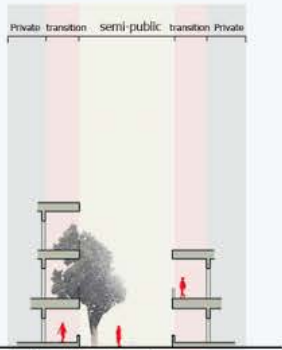


Barrier 1: BEIRUT MALL



Barrier 2: Tayoune tunnel

URBAN POCKETS



Communication in transitional space



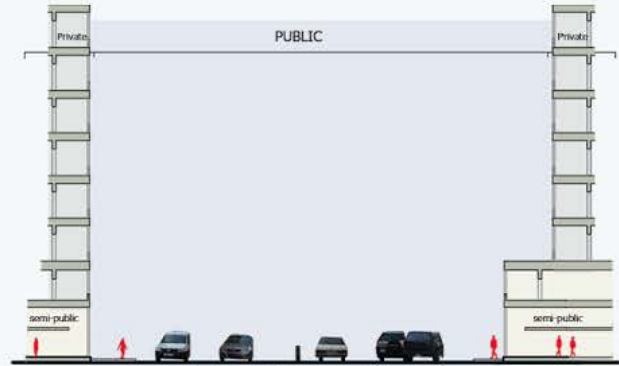
Parking acts as a transitional space in the urban pockets

In the urban pockets, both buildings and streets are proportional to the human scale making them human friendly, whereas in the new buildings the human does not relate neither to the scale of the buildings nor to the width of the street.

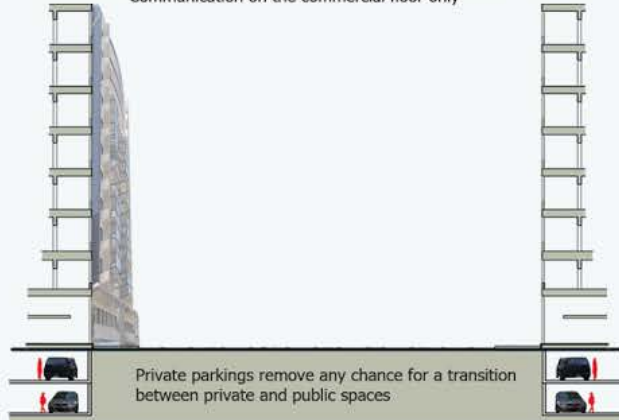


Human scale with respect to buildings and the width of the alley/street

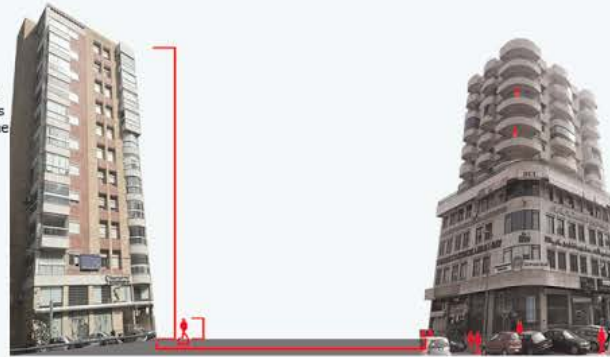
GREEN LINE



Communication on the commercial floor only



Private parkings remove any chance for a transition between private and public spaces



Chaotic BUT Homogeneous

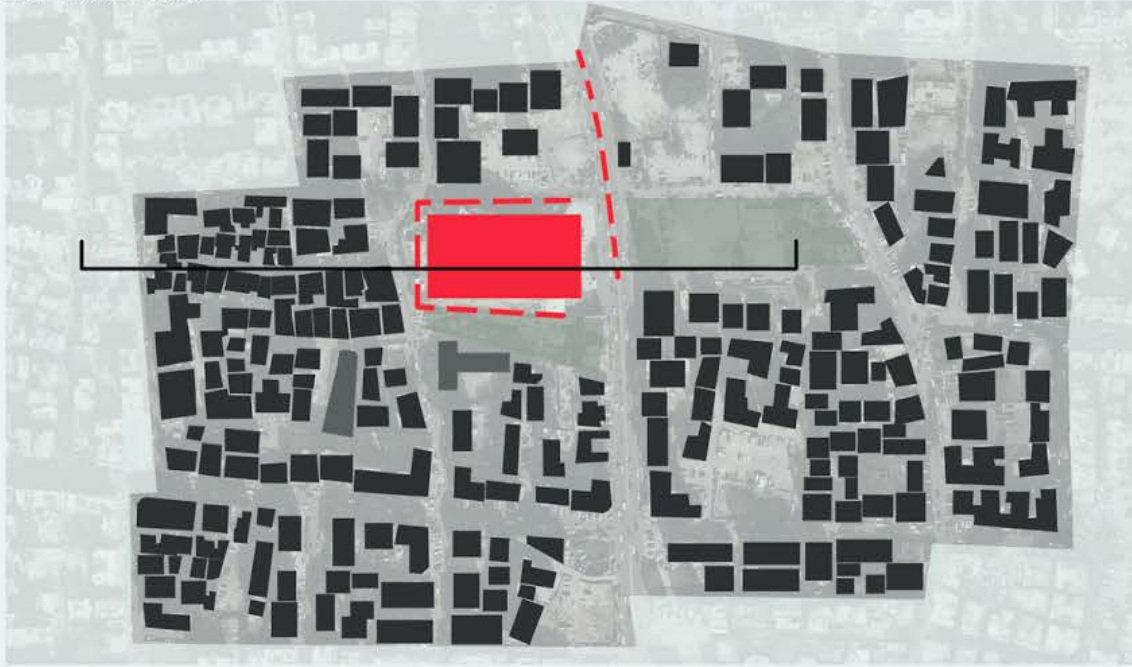
HOMOGENEOUS SKYLINE AND COMMON ELEMENTS



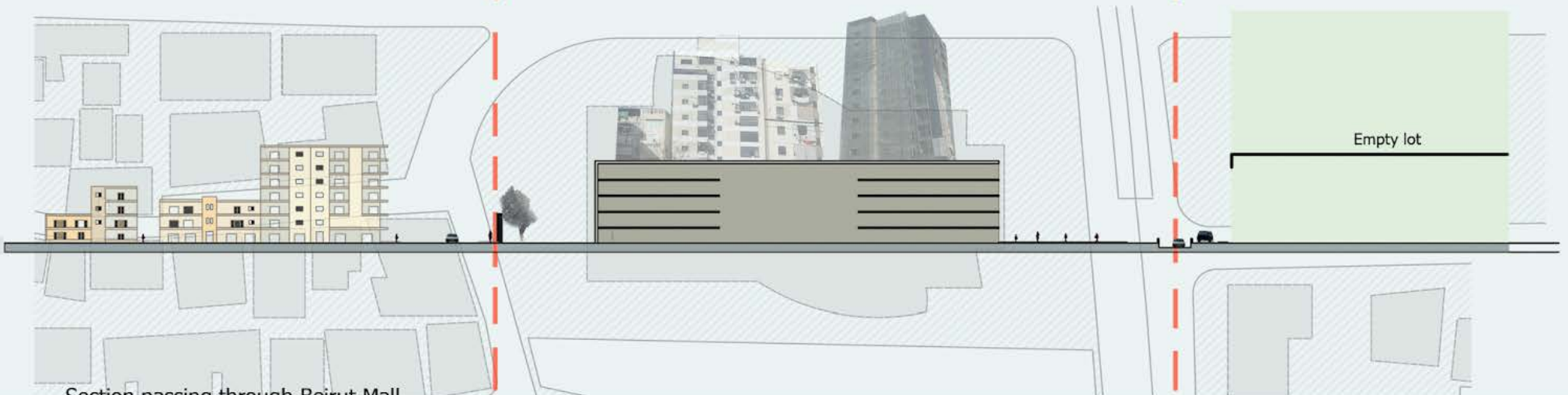
BEIRUT MALL as a barrier



View from the alley behind the mall towards the blind wall



View from towards the tunnel that acts as a separator

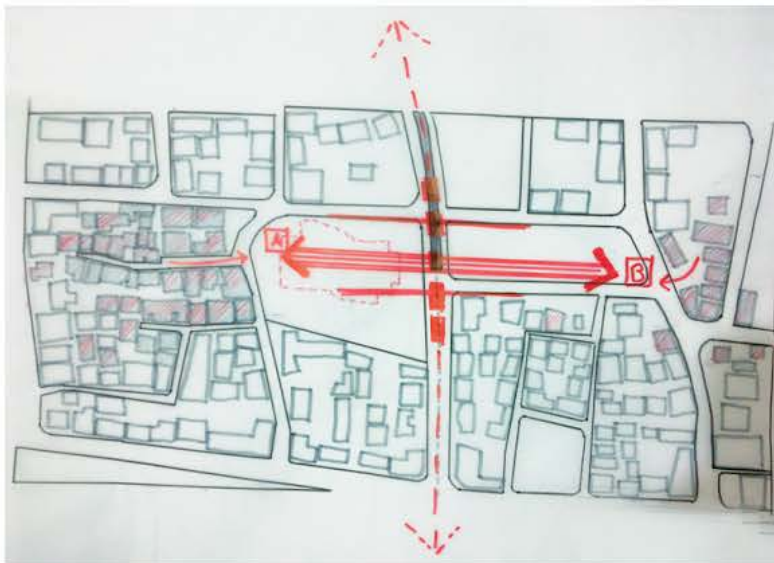


Section passing through Beirut Mall

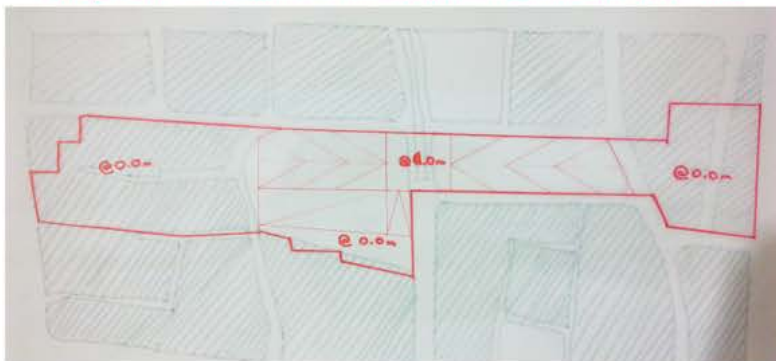
Step 1: remove mall and join empty lands to design alternative



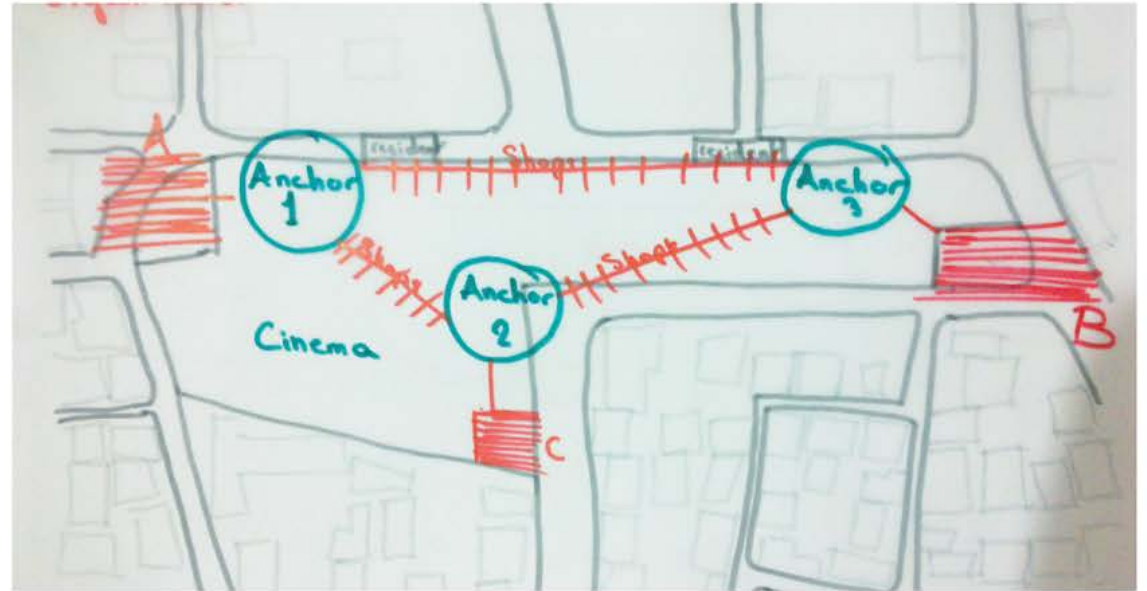
Step 2: Divert main axis from green line to A-B



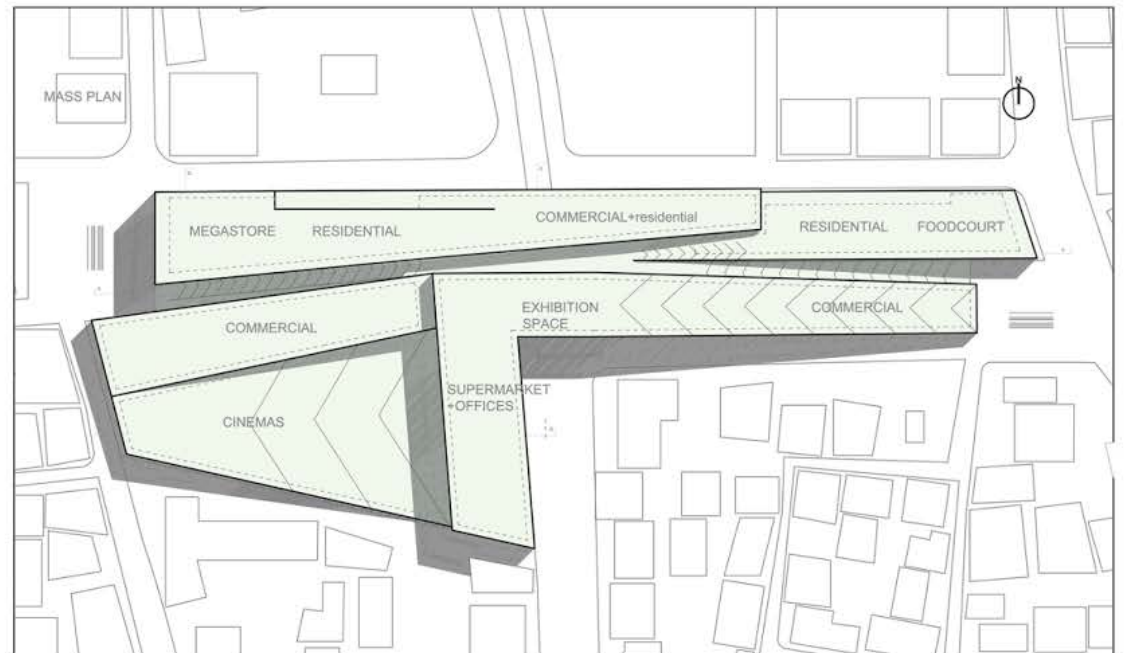
Step 3: Create artificial landscape above tunnel and green line



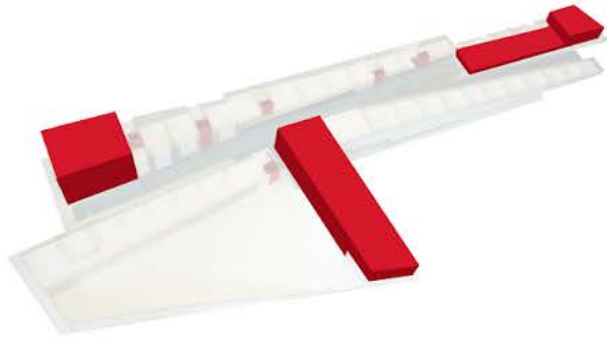
Step 4: Spot 3 anchors to connect all the functions



Step 5: Masses and Program



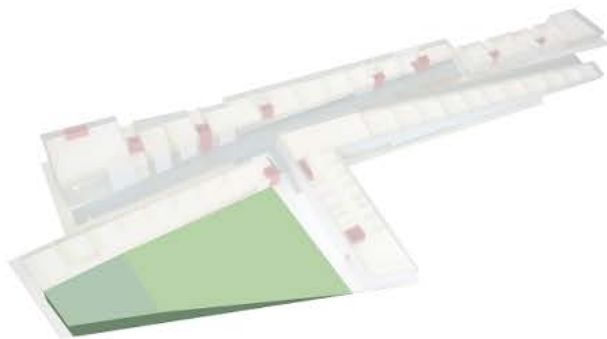
PROGRAM DIAGRAMS



Anchors



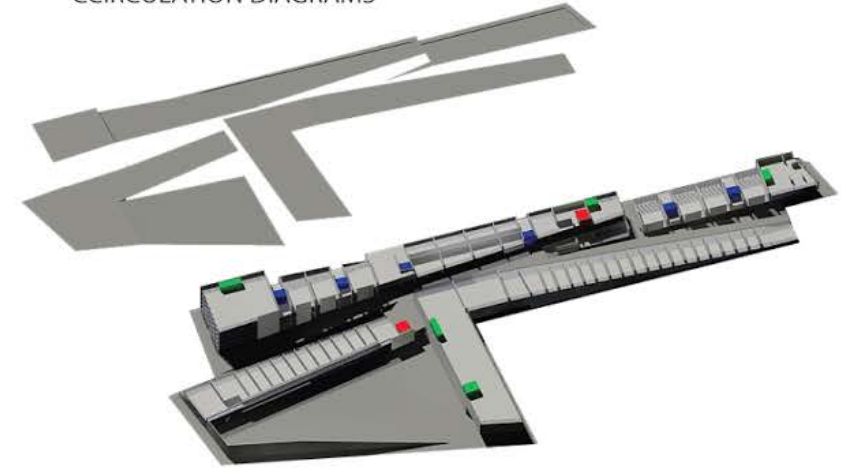
Residential



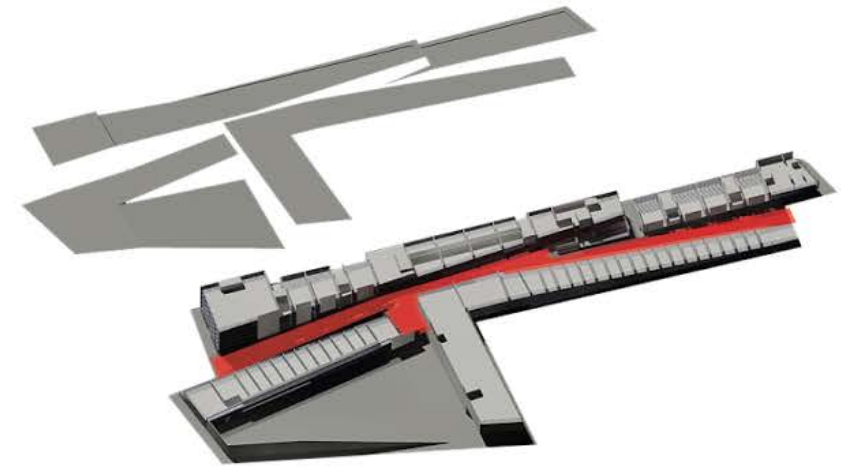
Cinema

| | |
|-------------------------------|----------|
| Retail + services | 13800 m2 |
| Outdoor space and circulation | 10200 m2 |
| Parking | 10000 m2 |
| Lofts (residential) | 5500 m2 |
| Storage | 4650 m2 |
| Supermarket | 4600 m2 |
| Megastore | 3700 m2 |
| Cinema | 3500 m2 |
| Foodcourt | 2000 m2 |
| Offices + exhibition space | 1400 m2 |

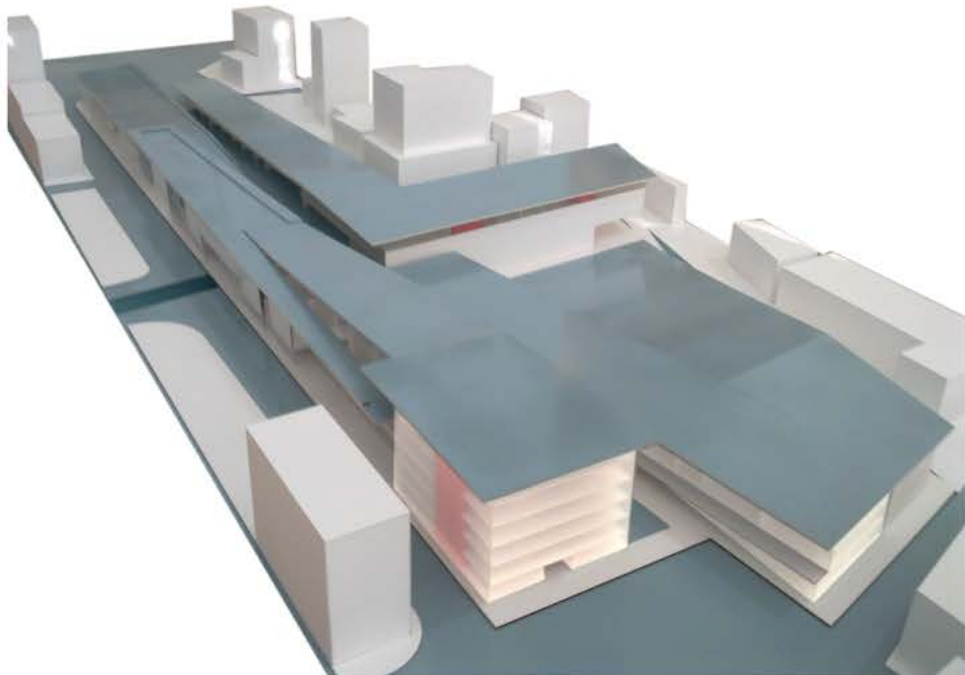
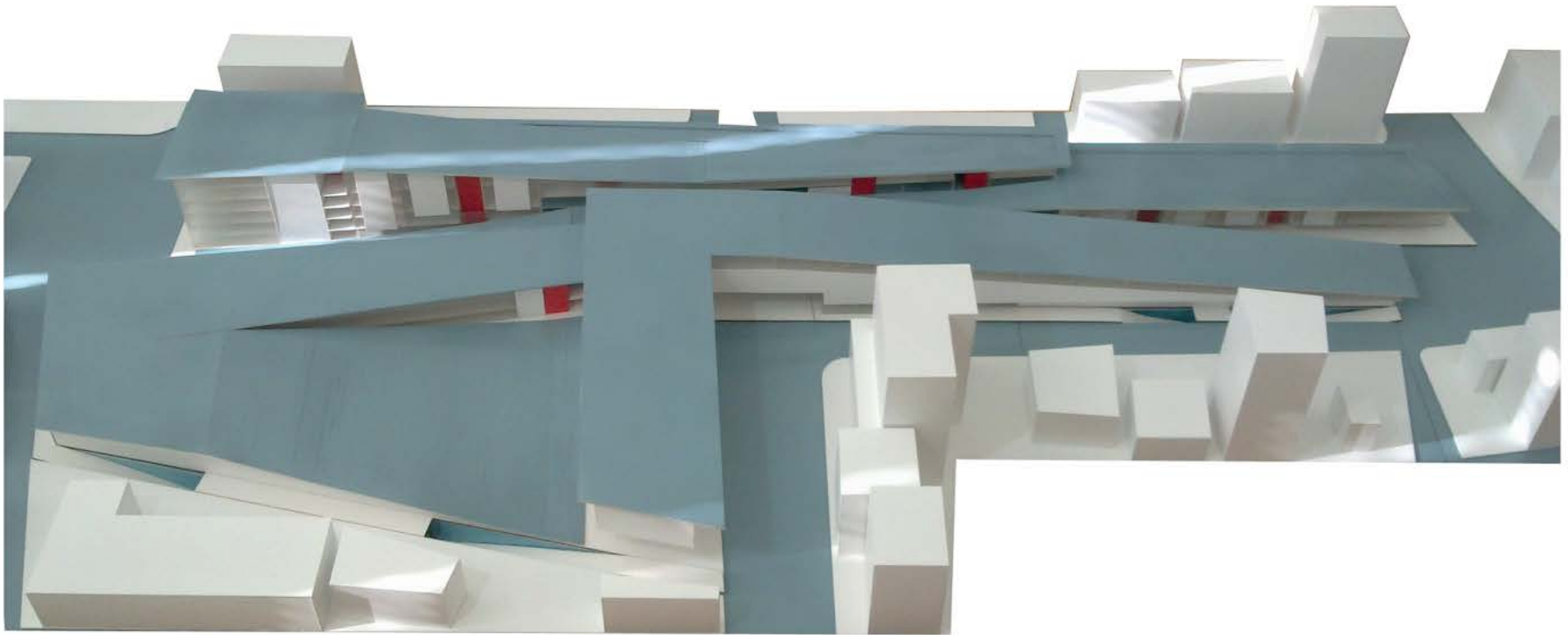
CCIRCULATION DIAGRAMS



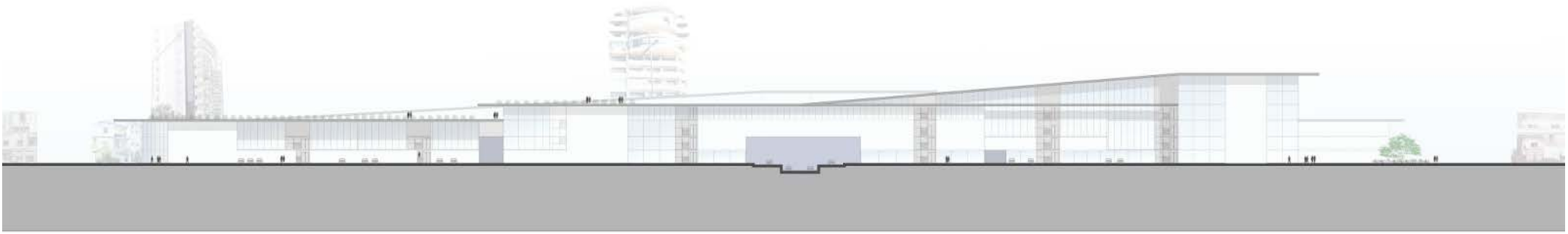
- vertical circulation for anchors
- vertical circulation for apartments
- vertical circulation for commercial use



main circulation through ramp- artificial landscape



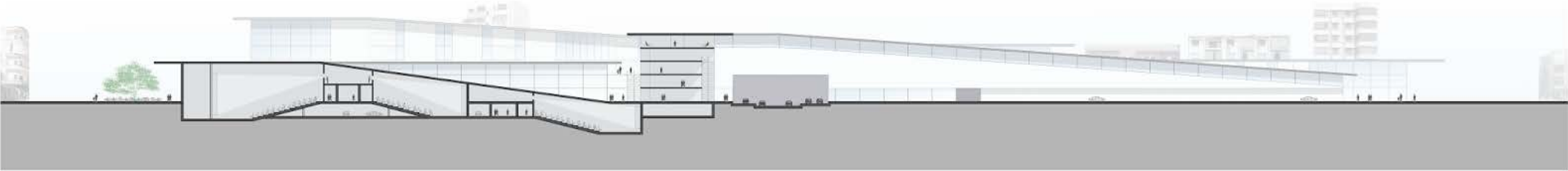
NORTH ELEVATION



GROUND FLOOR PLAN



SECTION B-B



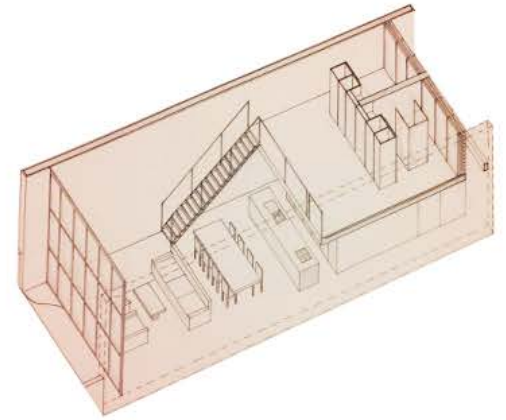
SECOND FLOOR PLAN 1/500





FOURTH FLOOR PLAN





FIFTH FLOOR PLAN

